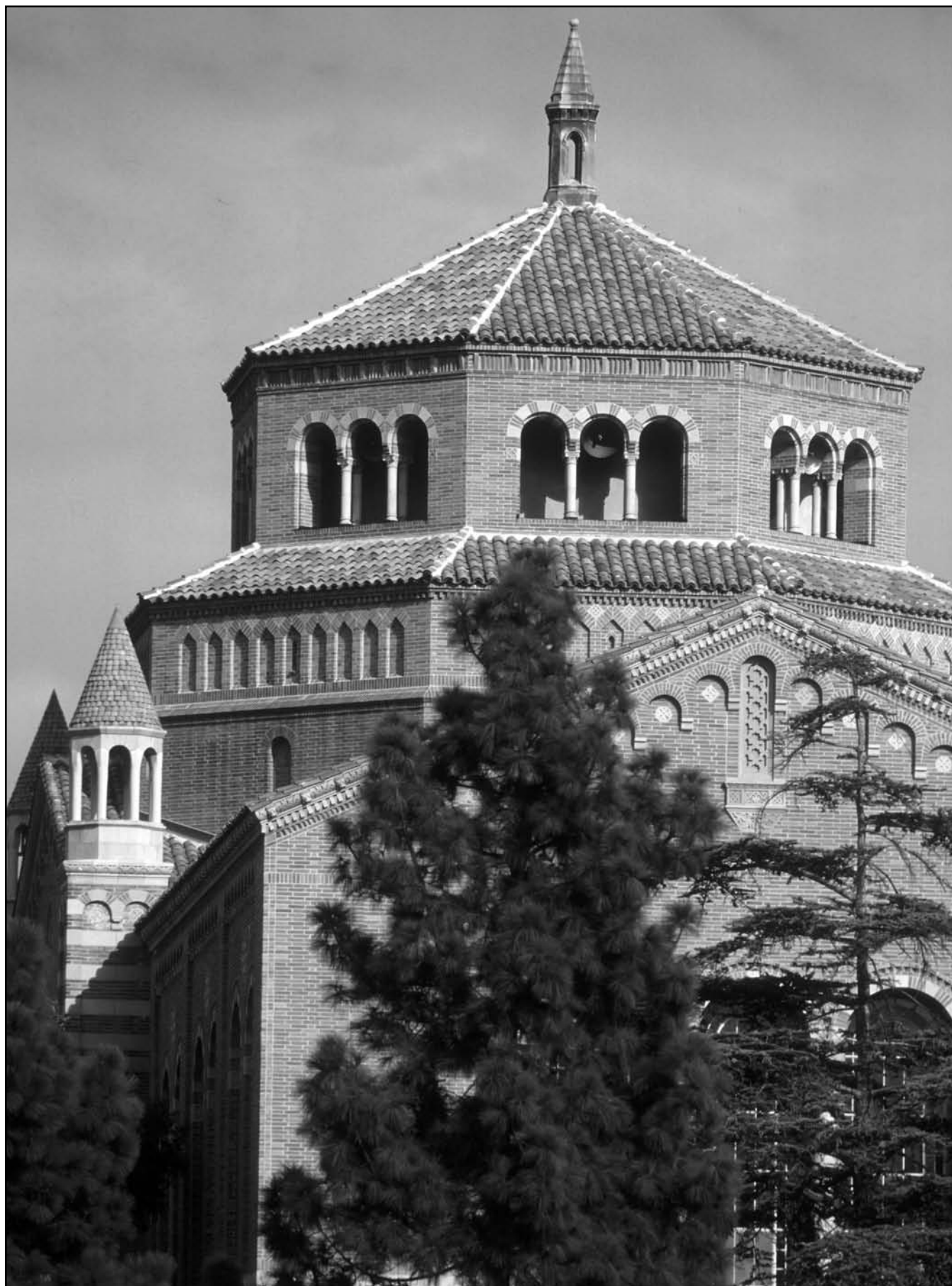


GENERAL INFORMATION



UCLA's Powell Library

NEWS MEDIA INFORMATION

CREDENTIALS

Admission to the Pauley Pavilion press box, sidelines and dressing area is by credential only. Requests should be made in writing at least one week prior to the game and addressed to Bill Bennett (bbennett@athletics.ucla.edu)/Marc Dellins, UCLA Sports Information Director, UCLA Athletic Department, 325 Westwood Plaza, Los Angeles, CA 90095-1639. Writers covering UCLA may request credentials for road games through Bennett or Dellins.

CREDENTIAL PICKUP

Credentials are available during the week at the Sports Information Office. Credentials not claimed before game day will be available at the "Press Will Call" window, which is located at the James West Center, directly across from the southeast corner of Pauley Pavilion. "Press Will Call" opens two hours prior to tipoff.

MEDIA PARKING

A limited number of single-game parking passes are available for purchase (\$7.00). These passes are good for a special area on the top level of Lot 8 (to the south of Pauley Pavilion), which can be reached by following Westwood Blvd. into campus from Westwood Village.

MEDIA ENTRANCE/SEATING

A press pass enables entrance at any Pauley Pavilion gate. Press seating is located mid-to-upper level on the North side (opposite the team benches) of Pauley.

MEDIA WORKROOM

The Chancellor's Room, located in the upper northeast corner of Pauley is the media workroom. Refreshments will be provided before opening tip-off.

MEDIA SERVICES

Media will be supplied with a program, pre-game notes, halftime and final statistics and a play-by-play account of the game. Quotes from both coaches will be supplied following the game.

TELECOMMUNICATIONS

Media members wishing to have stories or statistics transmitted from the press area should contact Amfax (Rick Laubert — 310/494-8757) for fax service. Media members wishing to order a telephone should contact Verizon at 800/344-4831. Three telephone lines have already been installed at the visiting radio position courtesy of XTRA Sports 570AM, UCLA's originating station. The UCLA Sports Information Office has two telephones at the working press tables available for use following the game.

PHOTOGRAPHY

Photo passes are available to accredited media and should be ordered in the same manner as media credentials. Photographers must work from the baselines between the basket support and the right sideline. Photographers are not allowed to shoot from the sidelines or seating areas at any time. Passes should be worn in plain sight at all times.

POST-GAME PROCEDURE

Following a cooling-off period, head coach Ben Howland and selected Bruin players will be available for interviews in the media workroom (Chancellor's Room). The UCLA locker room will be closed to the media after the game. The visiting coach will be available outside the visitor's locker room (SE corner/floor level/behind the bleachers).

WEEKDAY INTERVIEWS

Requests for coach and player interviews should be made to Bill Bennett/Marc Dellins in the UCLA Sports Information Office. Please give 24 hours notice.

Head Coach: Ben Howland hosts a media conference (with selected players) on Tuesday during the season at 1:30 p.m. in the UCLA Hall of Fame Press Room (first floor-J. D. Morgan Center). In addition, an audio tape of his Tuesday news conference is available for playback the rest of the week and also on the Bruin website (www.uclabruins.com).

Players: All interviews must be arranged through the SID office at least 24 hours in advance. Players (and coaches) will be available before practice (2 p.m.) on Tuesday at Coach Howland's press conference. Special player interview times on Monday and Tuesday can also be arranged through the Sports Information Office. Please do not expect players to be available if you have not made prior arrangements.

PRACTICE

The UCLA basketball team practices in Pauley Pavilion. Practices are closed to the media.

UCLA WEBSITE

All UCLA releases, results and statistics are posted on UCLA's official website. The address is www.uclabruins.com.

DIRECTIONS TO UCLA AND PAULEY PAVILION

From Los Angeles International Airport, take Century Blvd. east to the San Diego Freeway (405). Take the San Diego Freeway north to Wilshire Blvd. (approx. 15 miles). Go east on Wilshire, make a left on Westwood Blvd. go north to the campus. Stop at the parking

kiosk. Media parking (\$8) is available in Lot 8, on the west side of Westwood Blvd., just prior to Strathmore Drive.



IMPORTANT PHONE NUMBERS

UCLA Sports Information:
310/206-6831

SID Fax: 310/825-8664

Pauley Pavilion Press Row:
310/825-1899

Verizon Phone Orders for Pauley:
1-800-344-4831

UCLA's 24-Hour Hotline:
310/825-8575

TRZ Radio Broadcast Listen Line: 1-800-846-4700

UCLA Website:
www.uclabruins.com

NEWS MEDIA INFORMATION

In 2005-2006, the UCLA basketball team will again receive maximum television exposure with at least 25 regular season games scheduled to be televised live, including 13 network broadcasts. One other game may be televised as a "Wildcard" selection.

Two games will be televised by CBS and two will be televised by ABC and ESPN (ESPN2 will televise the preseason NIT). In addition, nine games will be televised as part of the Pacific-10 Conference's contract with Fox Sports Net, which includes 23 regional sports stations around the nation, including Fox Sports Net West, a regional sports cable company based in Los Angeles and available nationwide on Direct TV (channel 652). Eight games will be televised locally by Fox Sports Net West or Fox Sports Net West 2, a second regional sports cable channel also available on Direct TV (channel 653). Bill Macdonald will handle the play-by-play duties for UCLA's local Fox Net package.

This season, UCLA's men's basketball games will again be broadcast on XTRA Sports 570AM in Los Angeles. This is the ninth year of a partnership with the station and owner ClearChannel. In addition, ClearChannel has responsibility for syndicating Bruin basketball throughout the West Region.

Chris Roberts (talk@chrisrobertsonline.net) will be in his 14th year as the play-by-play voice of the Bruins and his 25th season broadcasting Div. I sports in Los Angeles. A four-time Golden Mike winner, he also handles the play-by-play duties for UCLA football. He recently authored a book about Bruin football titled "Stadium Stories" (www.stadiumstories.com). He has twice been nominated for the Southern California Broadcasters Assn. "Play-by-Play Broadcaster of the Year" award. Roberts is a voter for both the Heisman Trophy and Wooden

Award. Prior to joining the Bruin crew in Fall 1992, he served as the voice of the Long Beach State 49ers for 10 years. During that time, he was the sports director at KFI/KOST 103FM.

Don MacLean, the all-time leading scorer in UCLA and Pac-10 history (2,608 points, 1989-92) and a nine-year NBA standout, will be in his third year as the radio analyst.

Fan around the nation can also follow select UCLA games on SIRIUS Satellite Radio.

The game broadcasts are also available on the internet at www.ucla.bruins.com or www.xtra.sports570.com.



Don MacLean (l) and Chris Roberts, XTRA Sports 570



UCLA MEDIA OUTLETS

Legend: BW-Beat Writer, SE-Sports Editor, ESE-Exec. Sports Editor, SD-Sports Director, B-Broadcaster.

NEWSPAPERS

Los Angeles Times, 202 West First St., Los Angeles, CA 90053 — 213/237-7145. Bill Dwyre (SE), Steve Springer/Lonnie White (BW).

Orange County Register, 625 No. Grand Ave., Santa Ana, CA 92711 — 714/796-7817 (F). Greg Gibson (SE), Robert Kuwada (BW).

Los Angeles Daily News, P.O. Box 4200, Woodland Hills, CA 91365-4200 — 818/713-3600. Jon Clifford (ESE), Brian Dohn (BW).

South Bay Daily Breeze, 5215 Torrance Blvd., Torrance, CA 90509 — 310/540-4201. Todd Bailey (SE), Jim Thomas (BW).

Riverside Press-Enterprise, 3512 14th St., Riverside, CA 92502 — 951/368-9533. Dave Ammenheuser (SE), Kevin Pearson/Dan Weber (BW).

Long Beach Press-Telegram, 604 Pine Ave., Long Beach, CA 90844 — 562/499-1338. Jim McCormack (SE).

Pasadena Star-News/San Gabriel Valley Tribune, 1210 N. Azusa Canyon Rd., West Covina, CA 91790 — 626/962-8811. Doug Spoon (SE).

San Bernardino Sun, 399 "D" St., San Bernardino, CA 92401 — 909/386-3865, 909.

Antelope Valley Press, 37404 Sierra Hwy., P.O. Box 880, Palmdale, CA 93590 — 661/273-8465. John Purcell (SE).

Inland Valley Daily Bulletin, 2041 East 4th

St., Ontario, CA 91764 — 909/483-9375, 909.

Jim Gazzolo (SE).

The Sentinel, 3800 Crenshaw Blvd, Los Angeles, CA 90008 — 323/299-3800, Ken Miller (SE).

UCLA Daily Bruin, 308 Westwood Plaza, Los Angeles, CA 90024 — 310/825-9851. Adam de Jong (SE).

WIRE SERVICES AND NATIONAL PUBLICATIONS

Associated Press, 221 So. Figueroa, Suite 300, Los Angeles, CA 90012 — 213/626-1200. Ken Peters (SE), Beth Harris (BW).

USA Today, 10866 Wilshire, #890, Los Angeles, CA 90024 — 310/882-2400. David Leon Moore (L.A. BW).

TELEVISION STATIONS

CBS2, 6121 Sunset Blvd., Hollywood, CA 90028 — 323/460-3252. B: Jim Hill, Steve Hartman.

NBC4, 3000 W. Alameda Ave., Burbank, CA 91523 — 818/840-4237. B: Fred Roggin, Mario Solis.

ABC7, 500 Circle Seven Drive, Glendale, CA 91201 — 818/863-7677. B: Rob Fukuzaki, Curt Sandoval, Jon Hartung.

KTLA, 5800 Sunset Blvd., Hollywood, CA 90028 — 323/460-5907. B: Damon Andrews, Leila Feinstein.

KCAL, 6121 Sunset Blvd., Hollywood, CA 90028 — 323/460-3252. B: Alan Massengale, John Ireland.

KTTV/KCOP, 1999 S. Bundy Dr., Los Angeles, CA 90025-5235 — 310/584-2030. B: Rick Garcia,

Jennifer Gould.

Fox Sports Net West, 1100 South Flower, Suite 2200, Los Angeles, CA 90015 — 213/743-7800. Bill Macdonald (UCLA Play-By-Play and UCLA Sports Magazine Host).

Fox Sports Net West/Southern California Sports Report, 1100 S. Flower, Suite 2200, Los Angeles, CA 90015 — 213/743-7800. Hosts: Barry LeBrock, Michael Eaves, Patrick O'Neal, Lindsay Soto, Priscilla Hojiwala.

ESPN, ESPN Plaza, Bristol, CT 06010 — 860/766-2000. Local — B: Shelley Smith.

RADIO STATIONS

XTRA Sports 570 (UCLA Flagship Station), 3400 W. Olive Ave. #550, Burbank, CA 91505 — 818/559-2252. UCLA broadcasters: Chris Roberts (play-by-play), Don MacLean (analyst), GM: Don Martin; Asst. Program Director: Brian Blackmore.

KNX, 5670 Wilshire Blvd. #200, Los Angeles, CA 90036 — 323/964-8307.

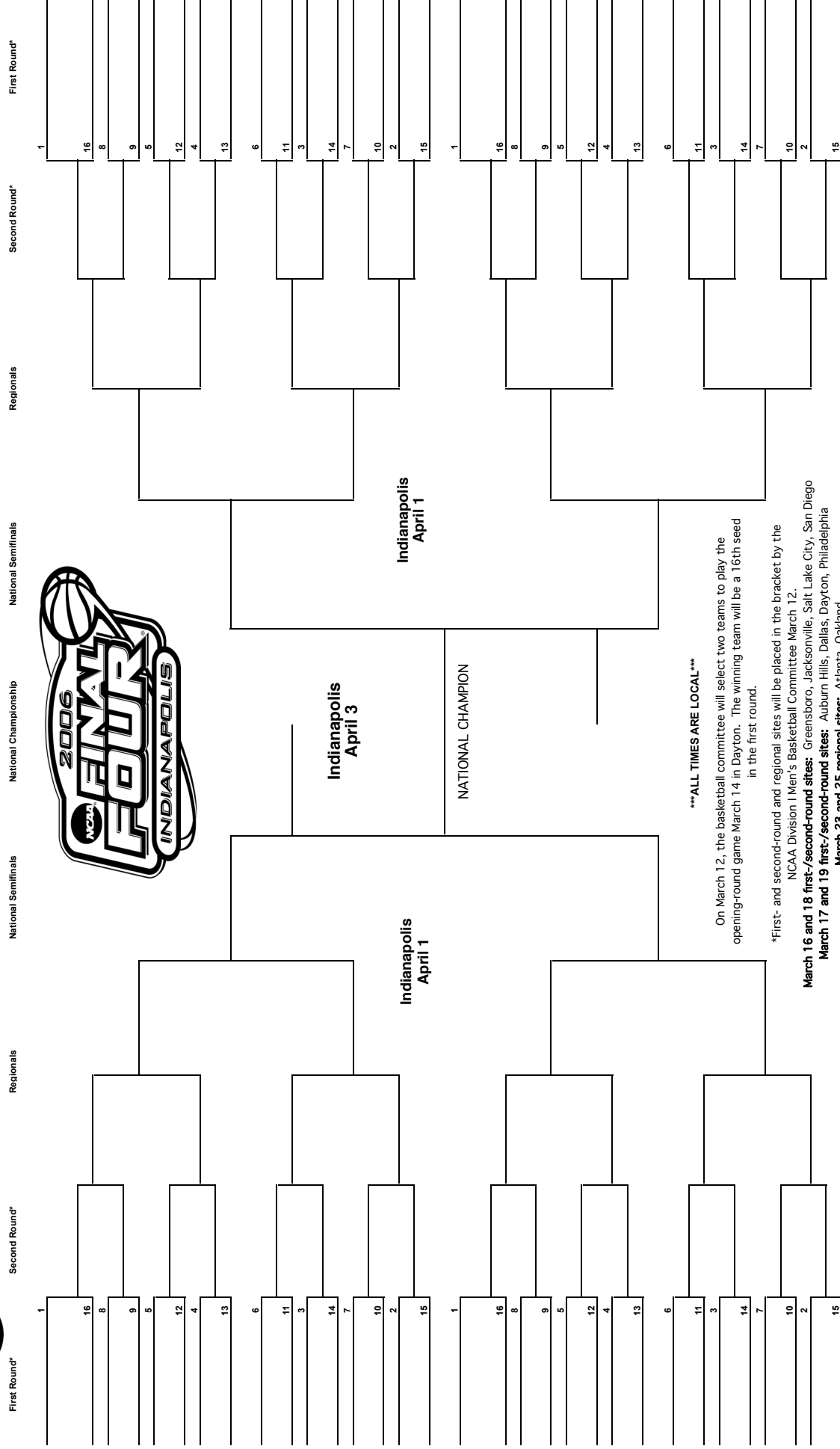
KFWB, 5670 Wilshire Blvd. #394, Los Angeles, CA 90036-5679 — 323/900-2098.

KSPN, 3321 S. LaCienega, Los Angeles, CA 90016 — 310/840-2492.

KMPC, 2800 28th St., Ste. 133, Santa Monica, CA 90404 — 310/452-7100.

XPRS, 3655 Nobel Drive, Ste. 470, San Diego, CA 92122 — 858/535-2500.

uclaradio.com, 308 Westwood Plaza, Los Angeles, CA 90024 (UCLA Student Station) — 310/825-9104.



2006 NCAA BASKETBALL CHAMPIONSHIPS DATES AND SITES

First/Second Rounds

Greensboro Coliseum (Host: Atlantic Coast Conference)
Greensboro, NC — March 16 & 18

Jacksonville Veterans Memorial Arena (Host: Jacksonville University)
Jacksonville, FL — March 16 & 18

Jon M. Huntsman Center (Hosts: University of Utah)
Salt Lake City, UT — March 16 & 18

Cox Arena (Host: San Diego State)
San Diego, CA — March 16 & 18

University of Dayton Arena (Host: University of Dayton)
Dayton, OH — March 17 & 19

Wachovia Center (Host: Atlantic 10 Conference)
Philadelphia, PA — March 17 & 19

American Airlines Center (Host: Big 12 Conference)
Dallas, TX — March 17 & 19

Palace of Auburn Hills (Host: Oakland University)
Auburn Hills, MI — March 17 & 19



Regionals

Atlanta: Georgia Dome (Host: Georgia Tech)
Atlanta, GA — March 23 & 25

Oakland: Oakland Arena (Host: University of San Francisco)
Oakland, CA — March 23 & 25

Washington, D.C.: MCI Center (Host: Georgetown University)
Washington, D. C. — March 24 & 26

Minneapolis: Hubert H. Humphrey Metrodome (Host: University of Minnesota)
Minneapolis, MN — March 24 & 26



Final Four Sites

2006 RCA Dome, Indianapolis, IN — April 1 & 3
2007 Georgia Dome, Atlanta, GA — March 31 & April 2
2008 Alamodome, San Antonio, TX — April 5 & 7
2009 Ford Field, Detroit, MI — April 4 & 6
2010 RCA Dome, Indianapolis, IN — April 3 & 5
2011 Reliant Stadium, Houston, TX — April 2 & 4



ADMINISTRATORS BIOGRAPHIES

ALBERT CARNESALE



Albert Carnesale became Chancellor of the University of California, Los Angeles (UCLA) on July 1, 1997. On September 7, 2005, he announced that he plans to step down as chancellor on June 30, 2006. Following a sabbatical leave, he intends to return to his teaching, scholarship and engagement in public policy issues. Carnesale is nationally known for his expertise in international affairs and national security policy.

As UCLA's chief executive officer, he leads an institution comprising more than 37,500 students and more than 27,000 faculty and staff; is responsible for all aspects of the University's mission of education, research, and service; manages an enterprise with an annual budget of more than \$3 billion; and serves as principal spokesman for the university community.

An active teacher and lecturer, Chancellor Carnesale holds professorial appointments in the School of Public Policy and Social Research and in the Henry Samueli School of Engineering and Applied Science. He teaches an undergraduate course in international affairs and security, and is a sought-after speaker on that topic, as well as on higher education. He is the author or co-author of six books and more than 50 scholarly articles on a wide range of subjects, including the control of nuclear weapons and other weapons of mass destruction, international energy issues, the effects of technological change on foreign and defense policy, and challenges and opportunities facing higher education.

Under Chancellor Carnesale's leadership, UCLA has continued to garner recognition and accolades for excellence across the full span of its enterprise. The Chancellor strongly supports the crossing of academic boundaries, an area in which UCLA has a distinct comparative advantage, given its broad range of disciplines on a single campus. Among the interdisciplinary endeavors launched during the past six years are the California NanoSystems Institute, a joint endeavor with UC Santa Barbara that was established as one of Governor Gray Davis'

CHANCELLOR • COOPER UNION '57 • NINTH YEAR DREXEL UNIVERSITY M.S. '61 NORTH CAROLINA STATE PH.D '66

California Institutes for Science and Innovation; the "Genetics and Society" initiative, which gave rise to the Center for Society, the Individual and Genetics; and "UCLA in LA," an umbrella program designed to strengthen and expand the University's extensive engagement with the broader community.

UCLA's research program has thrived during Chancellor Carnesale's tenure. In 2003-04, UCLA spent almost \$750 million in competitively-awarded, extramural contracts and grants — one of the highest levels of research funding among all universities in the United States.

Chancellor Carnesale also has guided UCLA to unprecedented achievement in the realm of private fund-raising. He has presided over the entire public phase of Campaign UCLA, the University's landmark development effort. Having reached each of its milestones ahead of schedule, the Campaign surpassed its goal of \$2.4 billion — double the original goal that was announced shortly before Mr. Carnesale's appointment. In fiscal year 2003-04, UCLA received a total of \$268 million in private gifts and pledges.

Prior to assuming the chancellorship of UCLA in 1997, Mr. Carnesale was at Harvard University for 23 years, serving as Provost of the University from 1994 to 1997. He held the Lucius N. Littauer Professorship of Public Policy and Administration at Harvard's John F. Kennedy School of Government, where he served as Academic Dean (1981-91), and Dean (1991-95). His earlier career included positions in the private sector and in government.

Mr. Carnesale has represented the United States Government in high-level negotiations on defense and energy issues (including the Strategic Arms Limitation Talks, SALT I, with the Soviet Union), and has consulted regularly for several government agencies and companies. He holds bachelor's and master's degrees in mechanical engineering and a Ph.D. in nuclear engineering, has been awarded three honorary doctoral degrees, and is a fellow of the American Academy of Arts and Sciences and a member of the Council on Foreign Relations.

Mr. Carnesale and his wife, Robin, live in The Chancellor's Residence on the UCLA campus.

DONALD G. MORRISON



Donald G. Morrison is in his 12th year as UCLA's Faculty Athletic Representative. In 1997-98, he served as President of the Pacific-10 Conference.

Morrison, a specialist in management science and marketing, is the William E. Leonhard Professor in the Anderson Graduate School of Management.

A 1961 graduate of M.I.T. with a B.S. in mechanical engineering, Morrison earned a Ph.D. in operations research at Stanford University in 1965. He joined the Columbia Business School faculty the following year as assistant professor, served as associate professor from 1968 and was named professor of business in 1973. He has also served as visiting professor at Stanford and at the University of California, Berkeley. He joined the UCLA faculty in 1987.

Over the past 40 years, Morrison has supervised the doctoral dissertations of a number of students who are now faculty members of other leading institutions. Many are now on key editorial boards and six have

FACULTY ATHLETIC REPRESENTATIVE M.I.T. '61

endowed chairs. Morrison was the founding editor of the professional journal, *Marketing Science* and was editor-in-chief of *Management Science* for eight years. He has served as departmental editor or editorial board member of several other professional journals.

In 2002, Morrison was awarded the highest honor in the American Marketing Association, when he was named the McGraw-Hill/ Irwin Distinguished Educator of the Year.

He is the author or co-author of over 90 articles, with a special emphasis on marketing research and applied statistics. He has been an expert witness as a statistician in a number of legal cases and a consultant to industrial firms and government agencies.

Morrison, who will be 67 on February 26, served as captain of the M.I.T. track team. In 1961, he was the Eastern Conference long jump champion and placed third in the long jump at the New England Championships.

Morrison's wife Sherie is a professor in UCLA's Microbiology, Immunology and Molecular Genetics department. Their daughters Heather Felix and Michelle Oliva earned their MBA degrees from the Anderson Graduate School of Management at UCLA. The Morrisons also have three grandsons, Parker Graham Felix, Spencer Andrew Felix and Jake Carmine Oliva.

ADMINISTRATORS BIOGRAPHIES

DANIEL G. GUERRERO DIRECTOR OF ATHLETICS • UCLA '74 • FOURTH YEAR



On April 25, 2002, UCLA Chancellor Albert Carnesale announced that Daniel G. Guerrero had been named UCLA's eighth Director of Athletics, succeeding the retiring Peter Dalis. A former Bruin baseball player, Guerrero, who assumed his duties on July 1, 2002, exudes the pride of a student-athlete who is now calling the shots at his alma mater.

Guerrero, one of the most respected and talented administrators in intercollegiate athletics, has rapidly placed his mark on the program as the director of athletics at UCLA. Hailed

as one of the nation's leading athletic directors, his first three years in this position have resulted in unprecedented success for the Bruins' broad-based athletic program. Guerrero has clearly established a pattern of "image and substance" that few in his profession can match. UCLA stands as the No. 1 University in the nation for NCAA Team Championships (97) won, a number that continues to grow under his direction.

During Guerrero's tenure, UCLA teams have won 11 NCAA national championships, finished second eight times and have had an additional nine Top Five finishes. A staggering 55 teams (of 69 possible) have qualified for NCAA post-season competition and the football team has appeared in three bowl games. The program has also won 21 conference championships, produced 178 All-Americans and featured four Honda Award winners, including the 2003-04 Collegiate Woman Athlete of the Year.

Furthermore, during the 2004 Summer Olympic Games in Athens, Greece, 57 Bruins participated as athletes or coaches, representing the United States and 13 other countries. They earned 19 medals, including eight gold medals.

UCLA has finished third (2004-05), third (2003-04) and sixth (2002-03) in the race for the National Association of Collegiate Directors of Athletics (NACDA) Director's Cup. Only three institutions have made the top six each of the past three years, representative of UCLA's place among the nation's elite.

This past year, UCLA won three NCAA titles (men's water polo, men's tennis and women's water polo) and placed second in women's soccer, men's volleyball, women's golf and softball, tied for second in women's outdoor track and field, fourth in women's gymnastics, tied for fifth in women's volleyball and tied for ninth in men's soccer. UCLA also earned its first NCAA post-season appearance in women's rowing (varsity eight) and won eight conference championships.

In 2003-04, the Bruins won four NCAA titles (women's outdoor track and field, softball, women's golf and women's gymnastics). They also placed second in men's tennis, women's tennis and men's golf, tied for third in women's soccer, tied for fifth in men's soccer and women's

volleyball, fifth in women's indoor track and field, seventh in women's swimming and women's cross country, 12th in men's indoor track and field and tied for 17th in baseball and men's outdoor track and field. In addition, the Bruins captured seven league titles.

In Guerrero's first year at UCLA (2002-03), UCLA won four NCAA titles (men's soccer, women's gymnastics, women's water polo and women's softball). The Bruins placed third in men's golf, tied for third in men's tennis, tied for fifth in women's golf and women's tennis, eighth in women's outdoor track and field, tied for eighth in women's indoor track and field, tied for ninth in women's soccer, 11th in women's swimming, tied for 17th in women's volleyball and 19th in men's outdoor track and field. UCLA also earned six conference titles.

Over the past three years, Guerrero earned numerous honors, including 2002 UCLA Latino Alumnus of the Year (October 2002); Cal State Dominguez Hills' Alumnus of the Year (March); and 2003 "Father of the Year" by the Father's Day Council of the American Diabetes Association (June). On September 10, 2002, the Los Angeles City Council honored him with Dan Guerrero Day. He also became the first athlete in any sport at Banning (Wilmington, CA) High School to have his jersey (#8 in baseball) retired.

Guerrero was named one of the nation's Top 100 Most Influential Hispanics by Hispanic Business Magazine (October) and the May 5, 2003 issue of Sports Illustrated listed him #28 among the 101 Most Influential Minorities in Sports. He was one of 28 people whose photo was featured on that issue's cover.

In addition to unparalleled success in the playing arena, his first three years have also demonstrated the overall excellence Guerrero has made a priority for the program. Belief in conducting a program of integrity has been a cornerstone of Guerrero's leadership throughout his career. Named as a 1999 Sports Ethics Fellow

by the Institute for International Sport, Guerrero has fostered a strong sense of commitment and dedication among his coaches and staff to the development of the total student-athlete experience. He has also served as an Executive Board member of the National Consortium for Academics and Sport for over a decade and is resolute in his desire to support academic achievement and life skills development for UCLA student-athletes. As a result, he has spearheaded unprecedented growth in the Academic Support and Life Skills program at UCLA. In Guerrero's first two and two-thirds years, student-athletes earned 1,780 spots on the Director's Honor Roll (3.0 or higher grade-point average for a quarter) and community service activities for the program are at an all-time high.

Resource development has always been a strength for Guerrero and his tenure at UCLA has demonstrated continued evidence of this skill. In 2004-05, he successfully negotiated two blockbuster deals: a new multi-million dollar agreement with ISP Sports, a premier national collegiate sports marketing organization, and a six-year, multi-million dollar extension with adidas, equipment provider for all of UCLA's 24 sports.

Guerrero also led the negotiations that solidified the relationship



Athletic Director Dan Guerrero (l) at Ben Howland's introductory press conference on April 3, 2003.

ADMINISTRATORS BIOGRAPHIES



between UCLA and the Rose Bowl, inking a 20-year agreement, which included over \$13 million in facility enhancements to benefit the UCLA football program. He has also reorganized the External Relations area, integrating Corporate Sponsorships, Marketing and Development under one umbrella, in anticipation of a major revenue generating initiative designed to address capital project needs, operational support and program endowments.

Under Guerrero's guidance, UCLA continues to aggressively enhance its athletic facilities, including the completion of the Bud Knapp Football wing of the Acosta Center, and the sports medicine and strength and conditioning centers in the same complex. A new golf practice facility and the Easton Softball Stadium renovation, benefiting the Bruins' golf and softball powers, respectively, were completed for the 2004-05 season. The final phase of the Acosta Center project (Olympic sport locker rooms), the installation of synthetic turf at Spaulding Field, the construction of a new aquatic center and the renovation of Pauley Pavilion are projects slated for the future.

Guerrero has extensive experience in committee work at both the NCAA and conference level. He is serving his first year as a member of the NCAA Division I Men's Basketball Committee and the "College Basketball Partnership," a group formed by NCAA president Myles Brand, that includes many of the most influential people in the sport. He recently completed a stint as the Chair of both the Pac-10 Athletic Directors Committee and the Budget and Finance Committee. He is also a member of the Pac-10 Football Bowl, Revenue Sharing, and Compliance and Enforcement Committees. He has previously served on other NCAA committees, including the NCAA Division I Baseball Committee and at the time of his hire by UCLA was serving as the second vice president of the Division I-AAA Athletic Director's Association.

Guerrero came to UCLA from UC Irvine, where he had served as UCI's fifth permanent Director of Athletics for 10 years (1992-2002). The broad competitive success of its athletic teams, the academic excellence of its student-athletes, the development of new and improved facilities and enhanced relations with the UCI community, reflect the progress UC Irvine Athletics experienced under Guerrero's direction. During his tenure, the program continued to accumulate conference championships, garner national rankings, feature graduation rates among the nation's best, and win numerous post-season honors for its student-athletes. In June of 2002 while still at UC Irvine, he was named the 2001-02 Division I-AA/I-AAA West Region NACDA Athletic Director of the Year.

Resulting from Guerrero's resourcefulness and creativity, UCI experienced unprecedented activity in the area of athletic facilities development. In his final five years, Guerrero was the driving force behind \$38 million of newly constructed or renovated facilities. These projects included a newly renovated track and soccer complex, a new 64-meter competitive swimming pool, a new baseball stadium and the Anteater Recreation Center, one of the premier recreation centers in the country.

In addition, Guerrero was in the process of moving forward on another \$22 million in facility enhancements, including the development of an additional 26.8 acres of athletic field space, an expansion of the sports medicine center and strength and conditioning centers, the development of a new student-athlete academic study center and a new boathouse. Several of these projects have been completed.

Guerrero rallied tremendous assistance from the campus administration and the external community, spearheading record-setting numbers for donations, corporate sponsorships and endowment contributions. He was also instrumental in significantly enhancing scholarship funding for all sports and adding baseball, women's water polo, women's golf and women's indoor track to UCI's sport sponsorship menu. Prior to arriving at UC Irvine, Dan came from Cal State Dominguez Hills, where he led that program to national prominence while serving as Athletic Director for five years (1988-92).

Guerrero, 53, received his Bachelor's degree from UCLA in 1974 and played second base in the Bruin baseball program for four years. His batting average in Pacific-8 Conference games over three seasons as a varsity performer was .343. Guerrero, known as "Warrior" during his playing career, was inducted into the UCLA Baseball Hall of Fame in 1996. The Bruin Athletic Director earned a Master's degree in Public Administration in 1982 from Cal State Dominguez Hills and was named to the Pi Alpha Alpha Honor Society for Public Affairs and Public Policy that same year.

Guerrero, born on November 10, 1951 in Tucson, AZ, was raised in Wilmington, CA. He is married to the former Anne Marie Aniello and they have two daughters: Jenna (23) and Katie (19).

A LOOK AT UCLA

UCLA is one of the world's premier universities. Thirty-one of its departments are ranked among the top 20 in their fields, and thirteen of those departments are among the top ten. UCLA is the engine for real-world advances in health care, science, education, commerce, culture, humanistic studies, social exploration, and community service that enrich our neighborhoods, our nation, and our world. UCLA is a university with the size and scope to allow for unimagined diversity, unmatched breadth and depth of scholarship, and limitless possibility for its 24,000 undergraduates and 12,000 graduate students.

FACULTY, STUDENTS & ALUMNI

Five UCLA faculty have been awarded Nobel Prizes — the two most recent are Louis Ignarro in medicine (1998) and biochemist Paul Boyer in chemistry (1997). Among faculty there have been nine National Medals of Science recipients, and hundreds of Guggenheim Fellowships, Fulbright Awards and other academic distinctions. UCLA educates more students than other university in California and was the most sought-after institution in the nation for this fall's freshman class. At UCLA, thousands of students extend their educations beyond the classroom by working directly with faculty on research projects. Many UCLA undergraduates participate in major research studies, working one-on-one with world-renowned scholars as they discover and create new knowledge. UCLA's alumni are bright stars on the world stage. They include leaders of industry and commerce — Oscar, Grammy, Tony, and Emmy winners; philanthropists and public servants; Olympians and professional athletes; educators, engineers, bankers, and astronauts. Founded in 1934, the UCLA Alumni Association serves 86,400 members with a comprehensive array of services, programs and activities.

BOOKS & TECHNOLOGY

The UCLA Library is ranked among the top ten academic research libraries in North America with holdings of nearly eight million volumes. From the birth of the Internet at UCLA in 1969, UCLA continues to be a leader in resources for learning. UCLA is nationally recognized for developing ground-breaking computer services for undergraduates and was the first university to have a Web site for every undergraduate student. The university provides an innovative, on-line tool called "My.ucla.edu," which provides a Web page tailored to each student's academic needs.

OUTREACH & COMMUNITY SERVICE

From its founding, UCLA has been an integral and contributing part of the greater Los Angeles community. Outreach programs and volunteerism are as much a part of UCLA as academics and research, with hundreds of UCLA-sponsored programs providing a wide range of opportunities. Many of UCLA's undergraduates volunteer for these programs, including tutoring youths, adults and incarcerated youths; addressing health and edu-



cational needs of underserved communities; combating poverty and homelessness; aiding the elderly and disabled; and providing legal, social, medical and educational assistance to community residents.

Through outreach and academic Preparation programs, UCLA works with K-12 schools throughout Los Angeles to help greater numbers of students prepare to compete successfully for college. UCLA also is partnering with community colleges to increase the number of underrepresented students transferring to the university. Additionally, UCLA faculty, researchers and students provide leadership and public service in health care, law, economic development, social welfare, urban planning, public policy, arts and the environment. Most academic departments have major research projects, field studies or student internships that directly affect people's lives in Los Angeles, the state and the nation.

HEALTH CARE

Each year more than 450,000 patients from Southern California, the U.S. and around the globe come to the world-renowned UCLA Medical Center for treatment, while thousands more area residents receive care through SM-UCLA, primary care offices and community outreach health programs. The four schools in the medical enterprise are medicine, dentistry, nursing and public health. The medical center has been ranked as the best hospital in the West by U.S. News & World Report for 15 consecutive years. A new state-of-the-art medical center, which includes UCLA Medical Center, UCLA Neuropsychiatric Hospital and Mattel Children's Hospital at UCLA, is

under construction and is scheduled to open in 2007. SM-UCLA renovations are scheduled for completion in 2008. Groundbreaking research is constantly taking place in the Jonsson Comprehensive Cancer Center, the Gonda (Goldschmied) Neuroscience and Genetics Research Center and in many other centers and laboratories on campus.

ARTS

A diverse array of public arts programming makes UCLA the leading arts and cultural center of the West. More than 500,000 people annually attend arts events including theater, music, opera and dance performances, lectures, poetry readings, exhibitions, film screenings, and media arts that are presented by UCLA's two professional arts schools. Check the web sites at www.arts.ucla.edu and www.tft.ucla.edu for more information.

LIFELONG LEARNING

Another prime example of UCLA's connecting with the community is through UCLA Extension, one of the nation's largest divisions of continuing higher education, offering more than 4,500 courses each year in diverse fields of study.

In addition, the university conducts guided walking tours and distributes self-guided tour maps. For further information, call (310) 825-8764 or check out UCLA on the Web at www.ucla.edu.

UCLA'S ATHLETIC HALL OF FAME

The UCLA Athletics Hall of Fame enters its 22nd year of its existence and its fourth in a new location facing Westwood Plaza. The new Hall of Fame, double the size of its predecessor, opened in July of 2001.

The first floor in the east wing of the J.D. Morgan Athletics Center features the 8,000-square foot Athletics Hall of Fame and serves as the main entrance to the Department of Intercollegiate Athletics.

The Hall of Fame features state-of-the-art interactive displays; a mini-theater where Bruin video clips and highlights re-create past championship moments; a



John Wooden

timeline of important U.S., California and UCLA dates showing how sports weave into the great moments in history; a collection of Bruin memorabilia and much more.

UCLA athletic teams have won 97 NCAA team championships and each of those first-place trophies grace the Hall of Champions. Other exhibits include photos of UCLA's first-team All-Americans in football and basketball, Gary Beban's Heisman Trophy, Wooden Awards won by Marques Johnson and Ed O'Bannon and a special display highlighting all of UCLA's Honda and Broderick Cup winners. Displays on UCLA's football bowl victories, the Bruins' NCAA basketball tradition and UCLA's Olympic Games medal winners are featured in the new Hall of Fame.

Each of UCLA's sports has its own individual display area within the Hall of Fame. In addition, there are displays honoring Jackie Robinson, UCLA's Academic All-Americans and women in sports. There are also sample lockers of former Bruin greats in various sports.

In connection with the building, which originally opened in November of 1983, UCLA established a Hall of Fame with 25 charter members representing a cross-section of the school's athletic history. Each year, a minimum of one and a maximum of eight former UCLA athletes, coaches or administrators are added to the Hall of Fame. Following is a list of the 199 members, including the eight members inducted during the 2005 football season:

1984 (25 charter members): Bill Ackerman, athletic director; Lew Alcindor (Kareem Abdul-Jabbar), basketball; Arthur Ashe, tennis; Gary Beban, football; Mike Burton, swimming; Paul Cameron, football; Chris Chambliss, baseball; Elvin 'Ducky' Drake, track coach and trainer; Gail Godrich, basketball; Walt Hazzard (Mahdi Abdul-Rahman), basketball; Cecil Hollingsworth, football scout and gymnastics and wrestling coach; Rafer Johnson, track; Kirk Kilgour, volleyball; Billy Kilmer, football; Donn Moomaw, football; J.D. Morgan, athletic director and tennis coach; Jackie Robinson, football, baseball, basketball and track; Henry 'Red' Sanders, football coach; Al Sparlis, football; Bill Spaulding, football coach; Bill Walton, basketball; Kenny Washington, football; Bob Waterfield, football; Keith (Jamaal) Wilkes, basketball; and John Wooden, basketball coach.

1985 (6): Bob Davenport, football; Craig Dixon, track; Wilbur Johns, athletic director/basketball coach; Tommy Prothro, football coach; George Stanich, basketball/track; and Sidney Wicks, basketball.

1986 (8): Kermit Alexander, football;

The 2005 INDUCTEES

Hardiman Cureton, football
Dawn Dumble, track and field
Allen Fox, tennis
John Godina, track and field
Ed O'Bannon, basketball
Mike O'Hara, volleyball
Art Shurlock, gymnastics
Kenny Washington, basketball

Burr Baldwin, football; Keith Erickson, basketball; Mike Frankovich, football; Jimmy LuValle, track; Willie Naulls, basketball; Jerry Norman, basketball player and assistant coach; and Don Paul, football.

1987 (8): Don Barksdale, basketball; George Dickerson, football; Jack Ellena, football; Bert LaBrucherie, football; Dick Linthicum, basketball; Jim Salsbury, football; John Smith, track; Jack Tidball, tennis.

1988 (6): Sam Balter, basketball; Mel Farr Sr., football; Robert Fischer, athletic director; Marques Johnson, basketball; Ann Meyers (first woman inductee), basketball; and C.K. Yang, track.

1989 (7): Pete Dailey, football; Tom Fears, football; Vic Kelley, sports information director; Carl McBain, track; Karen

Moe-Thornton, swimming; Ernie Suwara, volleyball; and Pat Turner, track.

1990 (7): Evelyn Ashford, track; Dr. Bobby Brown, baseball; Stan Cole, water polo; Denny Crum, basketball; Norm Duncan, football/administration; Mike Marienthal, football/special service; Mike Warren, basketball.

1991 (7): Willie Banks, track; Kenny Easley, football; Brian Goodell, swimming; Briggs Hunt, wrestling; Tim Leary, baseball; Jerry Robinson, football; Sinjin Smith, volleyball.

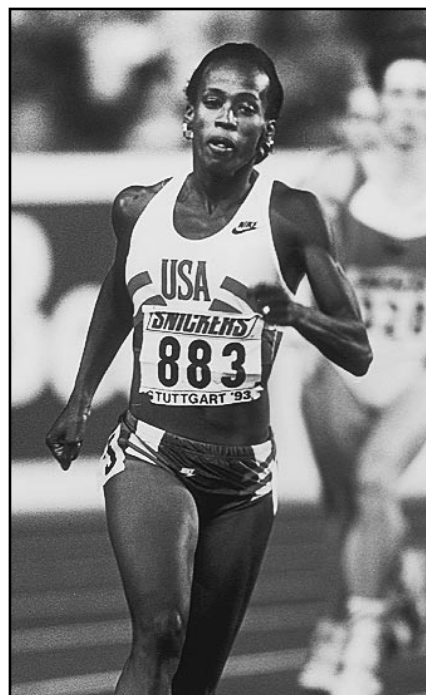
1992 (9): Wayne Collett, track; Terry Condon, volleyball; Jim Johnson, football; Robin Leamy, swimming; Freeman McNeil, football; Dave Meyers, basketball; Jack Myers, baseball; Corey Pavin, golf; Woody Strode, football.

1993 (8): Sue Enquist, softball; Greg Foster, track; Maurice (Mac) Goodstein, football; Karch Kiraly, volleyball; Jose Lopez, soccer; Don Manning, football; Bill Putnam, basketball; Curtis Rowe, basketball.

1994 (7): Donald Bragg, basketball; Denise Curry, basketball; John Richardson, football; Larry Rundle, volleyball; John Sciarra, football; Kiki Vandeweghe, basketball; Peter Vidmar, gymnastics.

1995 (8): Jimmy Connors, tennis; Debbie Doom, softball; Mitch Gaylord, gymnastics; Ricci Luyties, volleyball; Stephen Pate, golf; John Peterson, football/track; Jerry Shipkey, football; Mike Tully, track.

1996 (7): Bill Barrett, swimming;



Jackie Joyner-Kersey

UCLA'S ATHLETIC HALL OF FAME

Jackie Joyner-Kersey, track; Liz Masakayan, volleyball; Eddie Merrins, golf coach; Dot Richardson, softball; Skip Rowland, football; Dick Wallen, football.

1997 (8): Jim Bush, track coach; Paul Caligiuri, soccer; Tim Daggett, gymnastics; David Greenwood, basketball; Frank Lubin, basketball; Doug Partie, volleyball; Cal Rossi, football/baseball; Charles Young, chancellor.

1998 (12): Glenn Bassett, tennis coach; Sheila Cornell, softball; Randy Cross, football; Gaston Green, football; Florence Griffith-Joyner, track; Tom Jager, swimming; Eric Karros, baseball; Reggie Miller, basketball; Ken Norton Jr., football; Tom Ramsey, football; Art Reichle, baseball coach; Cy Young, track.

1999 (12): Troy Aikman, football; Sam Boghosian, football; Kay Cockerill, golf; Tracy Compton, softball; Denise Corlett, volleyball/basketball; Dave Dalby, football; Gail Devers, track; Bob Horn, water polo; Ernie Johnson, football; Torey Lovullo,

baseball; Sharon Shapiro, gymnastics; Kevin Young, track.

2000 (10): Lucius Allen, basketball; Jeanne Beauprey-Reeves, volleyball; John Brenner, track and field; George Farmer, football; Kim Hamilton, gymnastics; Carnell Lake, football; Billie Moore, basketball; Steve Salmons, volleyball; Eddie Sheldrake, basketball; Dick Vermeil, football.

2001 (11): Jill Andrews, gymnastics; Sharron Backus, softball; Jim Brown, football; Charles Cheshire, football; Gary Cunningham, basketball; Terry Donahue, football; Warren Edmonson, track and field; John Green, basketball; John Lee, football; Lisa Longaker, softball; Asbjorn Volstad, volleyball.

2002 (9): Denny Cline, volleyball; Bob Day, track and field; Cobi Jones, soccer; Don MacLean, basketball; Shane Mack, baseball;

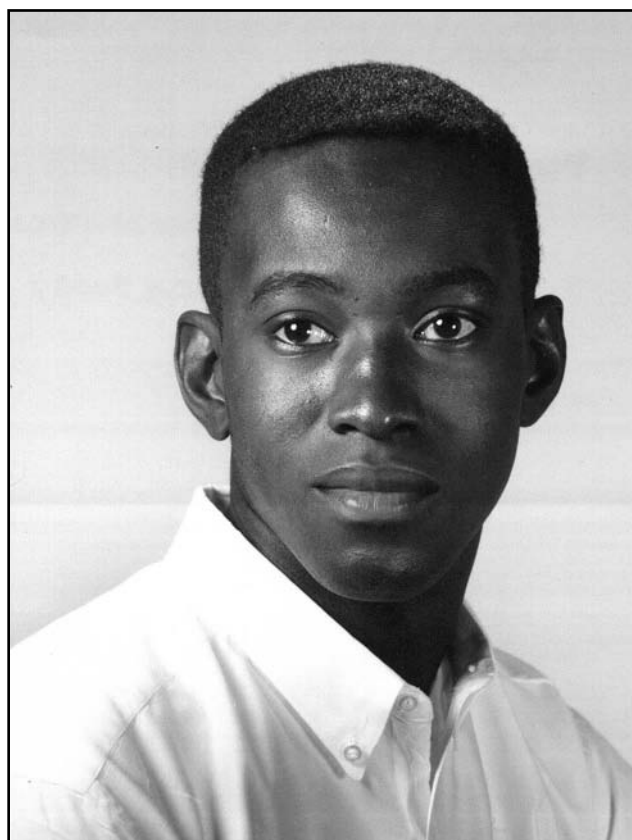


Ted Narleski, football; Anita Ortega, basketball; Duffy Waldorf, golf; Russell Webb, water polo/swimming.

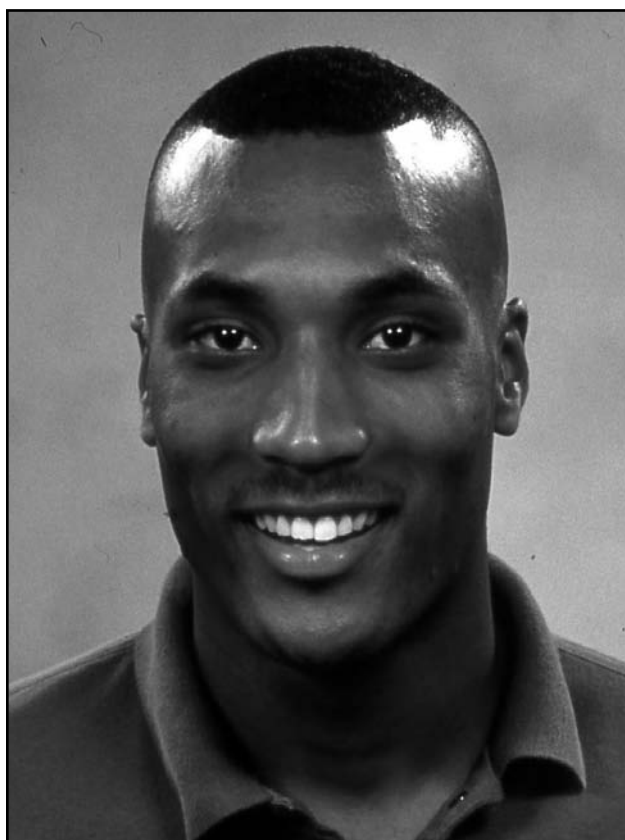
2003 (8): Danny Everett, track and field; Lisa Fernandez, softball; Brad Friedel, soccer; Ryan McGuire, baseball; Jerome "Pooh" Richardson, basketball; Don Rogers, football; Al Scates, volleyball; Tim Wrightman, football.

2004 (8): Henry Bibby, basketball; Dennis Dummit, football; Carlton Gray, football; Steve Lewis, track and field; James Owens, football/track and field; Sigi Schmid, soccer; Fred Slaughter, basketball; Natalie Williams, basketball/volleyball.

2005 (8) Hardiman Curreton, football; Dawn Dumble, track and field; Allen Fox, tennis; John Godina, track and field; Ed O'Bannon, basketball; Mike O'Hara, volleyball; Art Shurlock, gymnastics; Kenny



Kenny Washington was a member of UCLA's first NCAA Championship teams in 1964 and 1965 and a starter in 1966. In the 1964 NCAA Final, he came off the bench to score 26 points in UCLA's 98-89 victory over Duke. In the 1965 NCAA Final, he again came off the bench to score 17 points in the Bruins' 91-80 win over Michigan.



Ed O'Bannon, as a senior in 1995, led the Bruins to their 11th NCAA Championship. In the NCAA title game vs. defending champion Arkansas, O'Bannon had 30 points and 17 rebounds and was named the Final Four's Most Outstanding Player. The 1995 Wooden Award winner as the nation's top player, UCLA retired O'Bannon's No. 31 jersey in 1996.

ATHLETICS ENDOWMENT PROGRAM

The UCLA Athletics Campaign has endowed 191 of the 282 NCAA allowable athletic grants-in-aid. UCLA Athletics expresses its sincere gratitude to the individuals listed for their support in the continuing effort to distinguish UCLA as the nation's premier academic and athletics institution.

An endowment generates income to the University in perpetuity. By investing the gift principal and using just the interest earned to help meet the cost of a grant-in-aid assures the Athletic Department of on-

going funds to maintain the quality and diversity of its program.

Currently, UCLA provides financial assistance to over 400 student-athletes participating in 22 intercollegiate sports. However, expenses such as the cost of tuition for student-athletes have increased dramatically in the last several years while department revenues have remained relatively stable.

Tax-deductible gifts to the UCLA Athletic Fund play a pivotal role in meeting the escalating costs of team travel, recruiting, equipment replacement and, most importantly, in providing athletic scholarships. Now

more than ever, private support is necessary if UCLA is to maintain its position as the best athletic program in the country. Your help is truly needed and greatly appreciated.

To encourage private support of our program, the best football and basketball tickets are allocated to our most generous donors. Members of the Athletic Fund receive priority in the assignment of tickets for home contests in the Rose Bowl and in Pauley Pavilion in accordance with the UCLA Priority Seating Policy. Please refer to the donor benefits chart to determine season ticket opportunities. In many cases, special reserved parking is also available for our donors.

For questions regarding the UCLA Athletic Fund or the benefits members receive, please contact the Athletic Fund Office at 310/206-3302.

UCLA Athletic Fund Support Group & Membership Benefits

	Annual Fund	Bruin Bench	Bruin Athletic Club	Bruin Athletic Club Sustaining	Coaches Roundtable
Membership Card	*	*	*	*	*
Invitations to Special Events		*	*	*	*
UCLA Sports Gift		*	*	*	*
*Rose Bowl Parking		★	★	★	★
UCLA Recreation Card		★	★	★	★
Rose Bowl Pre-Game Parties			★	★	★
UCLA Campus Parking				★	*
Special Programs with UCLA Coaches					*
*Football Seating Priority (Priority Area)		4 Seats	6 Seats	8 Seats	10 Seats
*Basketball Seating Priority (Priority Area)			4 Seats	4 Seats	4 Seats
*Subject to availability. * Complimentary with membership ★ Option to purchase					

GRANT-IN-AID DONORS*

FOOTBALL

Edgardo & Francesca Acosta
Troy Aikman
John & Catherine Allen
Bill & Kathleen Bitting
Bill & Peggy Bloomfield
Terry & Dora Brigham
Tom & Arabelle Brown
In memory of Bob Campbell
Estate of John Canaday
Jim & Carol Collins
Ronald Conway Family
Allan & Carey Cooper
Jim Devere
Bernie & Virginia Diener
Warren & Pat Dodson
Ben & Pat Dolson
Terry & Andrea Donahue
Dick & Lita Dulgarian
Rudy & Joanne Feldman
Robert Geddes
Rose Gilbert
John & Carlin Glucksman
Paul & Gloria Griffin
John & Linda Gunn
Judd & Jeannette Henkes
Ed & Merle Hollywood
John D. & Betty Howard
Family
David Johnson & Marilyn Ghirelli
Ken Kaplan
Peter & Patti Kranske
Bob Leonard
Randall & Janell Lewis
Robert F. Lewis & Family
Art & Lindsey Lombardi
Jerry & Dorothy Long
Tony & Geri Longo

Angelo Mazzone
Darrel & Geri Mayes
Carl & Bette McBain
John Morris
Violet Mugler (In memory of Charles Mugler)
Matsue Muranaka
John & James Pagliuso
Hoyt Pardee
James & Beverly Peters
Carl Peterson
John & Marolyn Peterson
In memory of Brett Purdy
Gregory G. Turk for the Purdy & Turk Families
Stephen & Janet Rogers
Len & Joanne Roth
J. Patrick Rothstein
Sanbo & Kay Sakaguchi
Leonard & Cornelia Sauble
Jim & Susan Stanley
Greg Taylor
Tommy & Erile Thompson
Russ & Char Torrey
In memory of Joe Valentine
Dick & Carol Vermeil
Walter, Finestone & Richter
Bob & Marion Wilson
Chuck & Annie Winner

MEN'S BASKETBALL
John & Catherine Allen
John Branca Family
Buddy & Linda Epstein
Larry Erickson
Rose Gilbert (In memory

of Sam Gilbert)
Jim & Sally Harrick
Ken & Di Kaplan
Nahum & Alice Lainer
John Morris
Willie & Anne Naulls
Pooh Richardson
Art & Shelly Rosenblum
Ralph & Shirley Shapiro (In honor of Sidney Wicks)
James & Sylvia Thayer
Tony & Sharon Thompson
George & Liz Vulich
In memory of Nell Wooden
Team Endowment
Carroll W. Adams
Steven Antebi
Tom & Arabelle Brown
Mark Canton
Allan B. Cooper (In memory of Harold Cooper)
Bernie & Virginia Diener
Eric Flamholtz & Yvonne Randle
Dick & Tricia Grey
Judd & Jeannette Henkes
Bruin Hoopsters
Rob Kahane
Dick & Phyllis King
Carl & Bette McBain
David A. Neuman
James M. Peters
Frank Pritt
Jay & Maria Rappaport
Irv & Phyllis Ryder
Jim Shirley
Chuck & Annie Winner
Billy Woo
Jackie Wright

WOMEN'S BASKETBALL

Evelyn and Eleanor Lloyd Dees
Parker & Spencer Felix
Rose Gilbert
Stephen & Ann Goldberg
Bette McBain
Kirk Pasich & Pamela Woods
Christopher, Kelly & Connor Pasich

MEN'S TENNIS

Glenn Bassett
Bob Garrow Family
Larry Greiner Family
Joel Hein Memorial
Jay Jackson
Steven & Ellen Jackson
William Martin Memorial

MEN'S TRACK AND FIELD

Jim & Carol Collins
Estate of Ducky Drake
Carl & Bette McBain

WOMEN'S TRACK AND FIELD

Victoria Cook Chapus

BASEBALL

Gene and Jackie Autry
Jim Devere
Rick & Karen Ganulin
Jack Gifford
Dennis Gilbert
Mary Jo Greenberg (In memory of Hank Greenberg)
Wayne & Dixie Harding

Tracy Gifford Jones & Cameron Jones
Eric Karros
Tim Leary
Shane Mack
Jeffrey S. Moorad
Arn & Nancy Tellem
David Weiner
Team Endowment:
Parents' Fund
10th Player Fund

MEN'S GOLF

Robert Bergman Memorial
Friends of College Golf honoring:
Eddie Merrins
Byron Nelson
Greg Norman
Arnold Palmer
Lee Trevino
Jack Keller

MEN'S SOCCER

Frank and Kathleen Marshall
Dan Tana

MEN'S WATER POLO

Arpad & Katherine Domyan
Irving & Betty Webb

WOMEN'S WATER POLO

Ted and Jennifer Weggeland

WOMEN'S GYMNASICS

Evelyn Dees
Donald R. Shepherd

WOMEN'S VOLLEYBALL

Terence Lim

WOMEN'S SOCCER

Arthur Levine & Lauren Leichtman
Shirley & Ralph Shapiro

WOMEN'S TENNIS

Gayle Godwin & Bill Zaima
Ronald Marks
In Memory of David May
John Morris
Murray & Lenore Neidorf
Pete Sampras
The Sutton Sisters

WOMEN'S GOLF

Bette McBain
Jackie Steinmann

MEN'S VOLLEYBALL

Charles Jackson Family
James Montgomery
Al Scates
Marty Shapiro
Tupac & Moy
The Von Hagens

WOMEN'S ROWING

Louise & Tom Jones
Family
In Honor of Amy Fuller

OTHER ENDOWMENTS

Bruin Boosters for Women's Sports/Dr. Judith R. Holland
James Devere
Estate of Lucille Moss
Henry & Dee Stickney

*Through Oct. 15, 2005

THE PACIFIC-10 CONFERENCE

Entering the 2005-06 school year, the Pacific-10 Conference continues to uphold its tradition as the "Conference of Champions."® Pac-10 members have claimed an incredible 90 NCAA team titles over the past 11 seasons, for an average of more than eight championships per academic year.

Even more impressive is the breadth of the Pac-10's success, as those 90 team titles have come in 21 different men's and women's sports. The Pac-10 has now led the nation in NCAA Championships 39 of the last 45 years and finished second five times.

Spanning nearly a century of outstanding athletics achievement, the Pac-10 has captured 342 NCAA titles (248 men's, 94 women's), far outdistancing the runner-up Big Ten Conference's 201 titles.

The Conference's reputation is further proven in the annual United State Sports Academy Directors' Cup competition, the prestigious award that honors the best overall collegiate athletics programs in the country. In the 2004-05 competition, three of the top 10, and seven of the top 18 Division I programs, were Pac-10 members: No. 1 STANFORD, No. 3 UCLA, No. 10 SOUTHERN CALIFORNIA, No. 11 ARIZONA STATE, No. 14 WASHINGTON, No. 15 CALIFORNIA and No. 18 ARIZONA.

The Pac-10 captured six NCAA titles in 2004-05, third-most in the nation. NCAA team champions from the Pac-10 in 2004-05 came from UCLA (men's tennis, men's water polo and women's water polo), STANFORD (women's volleyball and women's tennis) and CALIFORNIA (women's rowing). The Pac-10 also had runners-up in eight NCAA Championship events: women's golf (UCLA), soccer (UCLA) softball (UCLA), track and field (UCLA) and water polo (Stanford) and men's water polo (Stanford), swimming (Stanford) and volleyball (UCLA). Overall, the Conference had 20 teams finish in the top three at NCAA Championship events.

Participation in the postseason was a common occurrence for the Pac-10 in 2004-05. Of the 22 sports sponsored by the Pac-10, 19 witnessed at least half its teams participating in the postseason. The men sent 55 of a possible 89 teams into the postseason (61.8 percent), while the women sent 68 of a possible 98 teams into NCAA Tournament action (69.4 percent).

The Pac-10 experienced continued success in football as the league sent five teams to bowl games. The Pac-10 also sent nine teams — four men and five women — into the NCAA Basketball Tournament. The Conference continued its dominance in softball as all eight teams earned trips to NCAA regional play for the fourth time, the last being 2003. UCLA advanced to the first ever College World Series Championship Series, losing a 10-inning thriller in the third and deciding game. It marked the 15th time a Pac-10 team has finished as the runner-up in the WCWS, as opposed to a nation-leading 18 national championships.

On the men's side, Pac-10 members have won 248 NCAA team championships, far ahead of the the 188 claimed by the runner-up Big Ten. Men's NCAA crowns have come at a phenomenal rate for the Pac-10 - 15 basketball titles by five schools (more than any other conference), 49 tennis titles, 45 outdoor track and field crowns, and 24 baseball titles. Pac-10 members have won 24 of the last 36 NCAA titles in volleyball, 31 of the last 46 in water polo, and 20 total swimming and diving national championships.

On the women's side, the story is much the same. Since the NCAA began conducting women's championships 23 years ago, Pac-10 members have claimed at least four national titles in a single season on 16 occasions. Overall, the Pac-10 has captured 94 NCAA women's crowns, easily outdistancing the Southeastern Conference, which is second with 63. Pac-10 members have dominated a number of sports, winning 18 softball titles, 16 tennis crowns, 10 of the last 15 volleyball titles, 11 of the last 16 trophies in golf and eight in swimming and diving.

THE PAC-10 STAFF

Commissioner: Thomas C. Hansen

Assistant Commissioner, Championships & Administration: Christine Hoyles

Assistant Commissioner, Public Relations: Jim Muldoon

Assistant Commissioner, Electronic Communications: Duane Lindberg

Assistant Commissioner, Compliance: Mike Matthews

Assistant Commissioner, Business and Finance: Ben Jay

Assistant Commissioner, Enforcement: Ron Barker

Assistant Commissioner, Olympic Sports: Chris Dawson

Assistant Public Relations Director: Dave Hirsch

Assistant Public Relations Director: TBD

Championships Programs Manager: Bri Niemi

Assistant Championships Director: Kevin Anderson

Assistant Compliance Director: Erik Price

Financial Assistant: Lina Diaz

Coordinator of NCAA Governance Communications: Tammy Newman

Coordinator of Football Officiating: Verle Sorgen

Public Relations Interns: Alisa Brandle and Katie Cavender

Administrative Fellow: Nicole Strange

Historian: Wiles Hallock

Administrative Assistant to the Commissioner: Sandra Safford

Administrative Assistants: Wendy Heredia (Public Relations), Yvonne Halvorson (Administration), Michelle Zumalt (Electronic Communications)

Receptionist: Erin Heiney

IMPORTANT PHONE NUMBERS

Pac-10 Office: 925/932-4411

Fax: 925/932-4601

<http://www.pac-10.org>

NCAA TEAM TITLES BY SCHOOL (COMBINED)

UCLA	97
Stanford	90
USC	83
Oklahoma State	46
Arkansas	42
LSU	40
Texas	38
Michigan	32
North Carolina	31
Penn State	30

PAC-10 NCAA MEN'S TEAM TITLES BY SCHOOL

USC (1)	72
UCLA (2)	69
Stanford (3)	57
California	22
Oregon	10
Arizona State	10
Arizona	5
Washington State	2
Oregon State	1

PAC-10 NCAA WOMEN'S TEAM TITLES BY SCHOOL

Stanford (1)	33
UCLA (2)	28
USC	11
Arizona	9
Arizona State	6
Oregon	3
Washington	3
California	2

Note: Number in parentheses is national rank.

PAC-10 NCAA MEN'S TEAM TITLES BY SPORT

Baseball	24
Basketball	15
Boxing	1
Cross Country	9
Golf	12
Gymnastics	11
Soccer	4
Swimming	20
Tennis	49
Indoor Track	3
Outdoor Track	45
Volleyball	23
Water Polo	31
Wrestling	1

PAC-10 NCAA WOMEN'S TEAM TITLES BY SPORT

Basketball	4
Cross Country	4
Golf	11
Gymnastics	5
Indoor Track	2
Rowing	4
Softball	17
Swimming	9
Tennis	16
Outdoor Track	5
Volleyball	12
Water Polo	5

2005-06 UCLA WOMEN'S BASKETBALL SCHEDULE



Kathy Olivier
Head Coach



Nikki Blue
Senior Guard

2005-2006 UCLA WOMEN'S BASKETBALL SCHEDULE

Date	Opponent/Tournament	Site	Time
Sunday, Nov. 6	Love and Basketball (Exhibition)	Pauley Pavilion	2:00 PM
Sunday, Nov. 13	Play Mode (Exhibition)	Pauley Pavilion	2:00 PM
Friday, Nov. 18	at Baylor	Waco, TX	7:00 PM
Tuesday, Nov. 22	Brigham Young	Pauley Pavilion	7:00 PM
Friday, Nov. 25	Loyola Marymount Tournament	Los Angeles, CA	
	UCLA vs. Georgia		5:00 PM
	LMU vs. UNC-Charlotte		7:00 PM
Saturday, Nov. 26	Loyola Marymount Tournament	Los Angeles, CA	
	Consolation Game		3:00 PM
	Championship Game		5:00 PM
Wednesday, Nov. 30	UC Irvine	Pauley Pavilion	7:00 PM
Saturday, Dec. 3	at Clemson	Clemson, SC	TBA
Monday, Dec. 5	at Oklahoma	Norman, OK	TBA
Thursday, Dec. 8	Pepperdine	Pauley Pavilion	7:00 PM
Saturday, Dec. 17	at UC Santa Barbara	Santa Barbara, CA	2:00 PM
Tuesday, Dec. 20	*Oregon	Pauley Pavilion	7:00 PM
Thursday, Dec. 22	*Oregon State	Pauley Pavilion	7:00 PM
Friday, Dec. 30	*at UC Berkeley	Berkeley, CA	7:00 PM
Sunday, Jan. 1	*at Stanford	Palo Alto, CA	2:00 PM
Friday, Jan. 6	*Arizona	Pauley Pavilion	7:00 PM
Sunday, Jan. 8	*Arizona State	Pauley Pavilion	2:00 PM
Thursday, Jan. 12	*at Washington	Seattle, WA	7:00 PM
Saturday, Jan. 14	*at Washington State	Pullman, WA	TBA
Saturday, Jan. 21	*at USC	Los Angeles, CA	2:00 PM
Friday, Jan. 27	*Stanford	Pauley Pavilion	7:00 PM
Sunday, Jan. 29	*UC Berkeley	Pauley Pavilion	2:00 PM
Thursday, Feb. 2	*at Arizona State	Tempe, AZ	TBA
Saturday, Feb. 4	*at Arizona	Tucson, AZ	TBA
Thursday, Feb. 9	*Washington State	Pauley Pavilion	7:00 PM
Saturday, Feb. 11	*Washington	Pauley Pavilion	2:00 PM
Saturday, Feb. 18	*USC	Pauley Pavilion	2:00 PM
Thursday, Feb. 23	*at Oregon State	Corvallis, OR	TBA
Saturday, Feb. 25	*at Oregon	Eugene, OR	TBA

Home games in **bold**.

Game times are local to site.

* denotes Pacific-10 Conference Game.

Internet broadcast on www.uclabruins.com

PAULEY PAVILION: HOME OF THE BRUINS

Now in its 41st season as the home of Bruin athletic teams, Pauley Pavilion is regarded as one of the finest all-around collegiate facilities in the nation and has been the site of numerous illustrious events. In April 2004 (the Bruins won the team title) and April 1998 it was the site of the Women's NCAA Gymnastics Championships. On Oct. 14, 1995, it was the site of UCLA's first-ever Midnight Madness and on Apr. 5, 1995, it hosted a school-sponsored Pep Rally to honor UCLA's 11th NCAA Championship team. On May 20, 1994, President Bill Clinton was the keynote speaker for UCLA's 75th anniversary convocation and on Oct. 13, 1988, it served as the site of the Presidential Debate between candidates George Bush and Michael Dukakis. On Sept. 9, 1992, the Pavilion was site of the annual MTV Video Awards show. In 1991, Pauley served as the site for the 1991 U.S. Olympic Festival basketball and gymnastics competitions.

Some of the top names in the history of college basketball — players such as Lew Alcindor (Kareem Abdul-Jabbar), Bill Walton, Ed O'Bannon, Sidney Wicks, Marques Johnson, Reggie Miller, Baron Davis, Earl Watson, Jason Kapono, Ann Meyers, Denise Curry and Pete Maravich and coaches such as John Wooden, Dean Smith and Denny Crum — have appeared in Pauley. Numerous star athletes in other sports have enhanced Pauley's reputation as perhaps the nation's most famous collegiate sporting facility. In addition, many world-class competitions, including the 1984 Olympic gymnastics and a historic table tennis match between the United States and China; entertainers such as Bob Dylan, Bob Hope, Henry Mancini, Frank Sinatra, Luciano Pavarotti, Bobby Brown, Eric Clapton, Guns and Roses and the Grateful Dead have graced the Pavilion.

Of UCLA's 84 Pauley Pavilion losses, 52 have been in conference action. UCLA's longest winning streak in Pauley Pavilion was 98 games, including 15 victories in 1970-71, 17 wins in 1971-72 and 1972-73, 16 wins in 1973-74 and 1974-75 and the first 17 victories of 1975-76 before ending on Feb. 21, 1976 when Oregon defeated UCLA, 65-45.

In 2001-02, UCLA was 11-4 in Pauley. UCLA was 12-3 in 2000-01; 12-4 in 1999-2000; 15-1 in 1998-99; 13-2 in 1997-98; 13-3 in 1996-97; 12-1 in 1995-96; 15-0 in 1994-95 and 14-1 in 1993-94. In the 1990s, UCLA's record in Pauley Pavilion was 138-17 (89.0).

During the 1999-00 school year, UCLA won its 18th NCAA men's volleyball championship (its 10th in Pauley Pavilion). In 1987-88, Pauley was the site of the men's NCAA Basketball West Regional first and second rounds. In 1986-87, the Pavilion served as the site of the inaugural Pacific-10 Conference Post-Season Tournament. Other 1986-87 highlights included the Bruin men's gymnastics team winning its second NCAA team championship in the Pavilion and the UCLA men's volleyball team

winning its 12th title.

The Pavilion was the site of three NCAA championship events in 1984-85 — Men's and Women's Volleyball finals and Women's Basketball regionals. During the 1983-84 school year, Pauley served as the site of five NCAA events — Men's and Women's Gymnastics championships, Men's Basketball regionals, Women's Basketball Final Four and Men's Volleyball championships. The Pavilion also is used for intramural sports and Fine Arts events throughout the school year.

The Pavilion has been the site of three NCAA first and second round men's basketball playoffs (1979, '81 and '88), five NCAA men's basketball West Regionals (1966-69-73-76-84), one NCAA women's basketball Final Four (1984) and two West Regionals (1985 and '95), 12 NCAA men's volleyball championships (1970-71-75-77-79-84-85-87-89-93-96-00-05), two NCAA men's gymnastics championships (1984 and '87), three NCAA women's gymnastics championships (2004, '98, '84) and three NCAA women's volleyball championships (1981, '84 and '91).

Pauley Pavilion was introduced to the University at the June 1965 Commencement exercises, at which time it was dedicated and named for Regent Edwin W. Pauley, the principal donor to the building fund.

Total cost of the Pavilion was provided as follows: \$2,000,000 by the State, \$1,000,000 by the student body and in excess of \$2,000,000 by the alumni with \$1,000,000 of the alumni contribution donated on a matching basis by Regent Pauley. In October of 1990, a highly-efficient lighting system was installed that doubled the lighting capability in the Pavilion. In October of 1999, a state-of-the-art video scoreboard was installed in the multi-purpose facility.

Pauley contains 10,337 permanent upholstered seats and retractable bleachers for 2,482 spectators. The Pavilion has a basketball capacity of 12,819. The single-game attendance record of 13,478 was set on Feb. 23, 1997 (UCLA vs. Duke).

The 126-by-226 foot floor of the Pavilion accommodates three complete basketball courts. The Pavilion (310-825-4546) is managed by Susan Brown.

UCLA'S BASKETBALL RECORD IN PAULEY PAVILION

Year	Record	1986-87	17-2
1965-66	11-0	1987-88	11-6
1966-67	17-0	1988-89	12-2
1967-68	12-0	1989-90	13-2
1968-69	13-1	1990-91	15-2
1969-70	15-1	1991-92	14-2
1970-71	15-0	1992-93	14-3
1971-72	17-0	1993-94	14-1
1972-73	17-0	1994-95	15-0
1973-74	16-0	1995-96	12-1
1974-75	16-0	1996-97	13-3
1975-76	19-1	1997-98	13-2
1976-77	16-2	1998-99	15-1
1977-78	17-1	1999-00	12-4
1978-79	17-1	2000-01	12-3
1979-80	12-4	2001-02	11-4
1980-81	12-2	2002-03	5-10
1981-82	14-1	2003-04	9-6
1982-83	13-2	2004-05	12-3
1983-84	13-4	40 Years	549-84
1984-85	15-3		
1985-86	13-4		

PAULEY PAVILION ATTENDANCE

Year	Games	Total	Avg
1966	11	132,775	12,070
1967	17	212,567	12,504
1968	12	147,203	12,267
1969	14	174,992	12,499
1970	16	196,694	12,293
1971	15	187,473	12,498
1972	17	211,357	12,433
1973	17	212,750	12,515
1974	16	198,200	12,388
1975	16	198,142	12,384
1976	20	244,934	12,247
1977	18	201,180	11,177
1978	18	204,010	11,339
1979	18	212,042	11,780
1980	16	179,481	11,216
1981	14	162,017	11,573
1982	15	164,418	10,961
1983	15	162,760	10,850
1984	17	150,236	8,834
1985	18	152,934	8,496
1986	17	134,763	7,927
1987	*16	169,353	10,584
1988	17	133,534	7,855
1989	14	119,858	8,561
1990	15	143,010	9,534
1991	17	170,384	10,023
1992	16	177,003	11,063
1993	17	132,771	7,810
1994	15	163,531	10,902
1995	15	170,994	11,400
1996	13	154,331	11,872
1997	16	163,840	10,240
1998	15	161,089	10,739
1999	16	162,080	10,130
2000	16	151,047	9,440
2001	15	131,479	8,765
2002	15	150,321	10,021
2003	15	125,223	8,348
2004	15	139,973	9,332
2005	15	138,199	9,213
40 yrs.	630	6,699,498	10,634

*Does not include three home games in the Pacific-10 Conference Post-Season Tournament.

On Dec. 20, 2003 the floor in Pauley Pavilion was dedicated "Nell and John Wooden Court."

THE ATHLETIC STAFF

THE BASKETBALL STAFF (310/825-8699)

Head Coach.....	Ben Howland, Weber State '79
Assistant Coach	Donny Daniels, Cal State Fullerton '77
Assistant Coach	Ernie Zeigler, Cleary College '94
Assistant Coach	Kerry Keating, Seton Hall '93
Director of Basketball Operations.....	Chris Carlson, UC Santa Barbara '93
Administrative Assistant	Doug Erickson, San Jose State '90
Video Coordinator	Scott Garson, UC Santa Barbara '99
Speed-Strength & Conditioning Coach	E.J. "Doc" Kreis, Clemson '76
Basketball Trainer.....	Tony Spino, UCLA '74
Equipment Manager.....	Mike McBride, West Virginia '95
Director of Student-Athlete Counseling	Mike Casillas, UCLA '89
Academic Coordinator	Kenny Donaldson, UCLA '97
Administrative Assistant	Leslie Dalziel, UCLA '05
Head Manager.....	Corey McMahon
Student Managers.....	Iain MacMillan, Victor Shyu, Pavan Reddy, Spencer Onishi

THE ATHLETIC STAFF (310/825-8699)

Director of Athletics.....	Daniel G. Guerrero, UCLA '74
Faculty Athletic Representative	Donald Morrison, M.I.T. '61
Sr. Associate Ath. Director/Senior Women's Administrator.....	Petrina Long, California '77
Sr. Associate Ath. Director — External Relations	Ross Bjork, Emporia State '95
Sr. Associate Ath. Director — Business Operations	Ken Weiner, UCLA '78
Associate Ath. Director — Sports Information.....	Marc Dellins, UCLA '76
Associate Ath. Director — Sports and Administration.....	Bob Field, Arkansas '71
Associate Ath. Director — Development.....	Ken McGuire, Long Beach State '72
Associate Ath. Director — Business and Finance	David Secor, UCLA '85
Associate Ath. Director — Recruiting.....	Mike Sondheimer, UCLA '77
Associate Ath. Director — Sports and Administration.....	Glenn Toth, UCLA '76
Bruin Sports Properties General Manager.....	Steven Braine, Virginia Tech, '93
Director of Compliance	Rich Herczog, UCLA '75
Assistant Ath. Director — Operations.....	Mike Dowling, UCLA '83
Director of Student-Athlete Academic Services/Counseling.....	Mike Casillas, UCLA '89
Life Skills & Championship Coordinator.....	Ashley Armstrong, UC Davis '95
Athletic Fund Director	Sharon Takeda, UCLA '89
Marketing Director	Scott Mitchell, Utah '81
Speed-Strength & Conditioning Coach	E.J. "Doc" Kreis, Clemson '76
Central Ticket Office Director	David Lowenstein, UCLA '64
Head Team Physician.....	Dr. Gerald Finerman, Penn '58
Associate Team Physician.....	Dr. John Difiori, Franklin & Marshall '85
Assistant Team Physicians.....	Dr. Sharon Hame, UCLA '85; Dr. Aurelia Nattiv, UCLA '81; Dr. David McAllister, UC San Diego '88; Dr. Ali Motamedi, California '89
Team Nutritionist	Felice Kurtzman, UCLA '77
Team Dentist	Dr. Ray Padilla, USIU '73
Head Athletic Trainer	Dale Rudd, Cal State Northridge '76
Head Football Trainer.....	Debbie Iwasaki, UCLA '90
Athletic Training Staff.....	Lorita Granger, CS Fullerton '82; Tandice Hawkey, Illinois '02; Jennifer Nickerson, Pacific '01; Marc Norcross, Boston '01; Carrie Rubertino, Ohio State '98; Mark Schoen, Pacific '93; Tony Spino, UCLA '74; Anthony Venute, UCLA '02
Equipment Manager.....	Mike McBride, West Virginia '95
Equipment Staff	Tony Perri, UCLA '84; Sean Markus, Colorado State '02
Video Coordinator	Ken Norris

THE SPORTS INFORMATION STAFF (310/206-6831)

Associate Athletic Director/Sports Information Director	Marc Dellins, UCLA '76
Associate SID	Steve Rourke, Virginia '79
Associate SID - Men's Basketball.....	Bill Bennett, Nebraska '74
Associate SID	Rich Bertolucci, Santa Clara '81
Assistant SID	Liza David, UCLA '95
Assistant SID	Amy Symons Hughes, DePauw '93
Assistant SID	Danny Harrington, San Diego State '97
Sports Information Assistant.....	Stephanie Sampson, Long Beach State '03
Sports Information Assistant.....	Bryan DeSena, UC Santa Barbara '04
Student Assistants.....	Ashwin Batra, Allison Chislock, Scott Henry, Jeanette Nieto, Mitchell Rotenberg, Megan Suehiro

IMPORTANT PHONE NUMBERS AND ADDRESSES

UCLA Sports Information:

U.S. Mail: P.O. Box 24044, Los Angeles, CA 90024-0044

Federal Express or UPS: J.D. Morgan Center, 325 Westwood Plaza, Los Angeles, CA 90095-1639

Telephone: 310/206-6831

SID Fax: 310/825-8664

Pauley Pavilion Press Row: 310/825-1899

UCLA Central Ticket Office:

310/UCLA-WIN

UCLA Results Hotline:

310/825-8575

UCLA Athletics Web Site Address:

uclabruins.com

Radio Broadcast Web Site Address:

uclabruins.com

TRZ Radio Broadcast Listen Line:

1-800-846-4700 x5929

(credit card charge)

